



# KNS2538NCPL

## NURSERY CART W/ PLASTIC DECK (NON-NESTING)



Designed for nurseries and garden centers, this two-tier cart features a steel frame and durable plastic shelves. Available in standard or heavy-duty and suited for indoor/outdoor use.

### KNS2538NCPL – Standard Duty

Features 5" rear polyurethane wheels

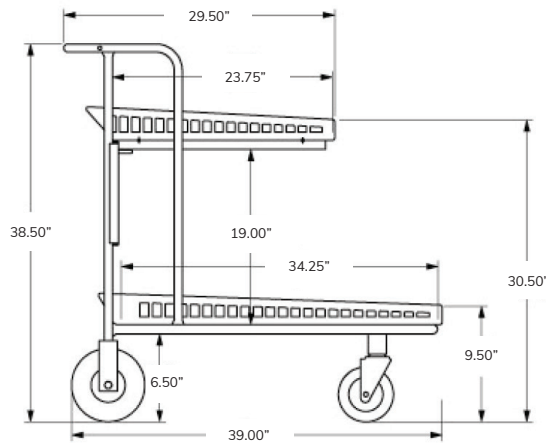
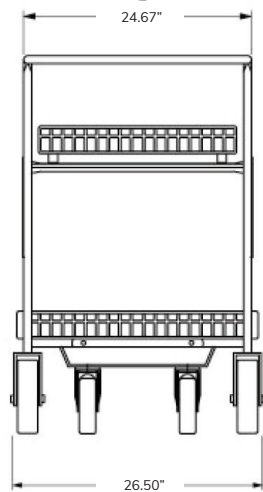
### KNS2538NCPLHD – Heavy Duty

Features 8" rear semi-pneumatic wheels

### OPTIONS:

- Frame available in any color finish or texture
- P&H Super Wheels (exceptionally quiet, longer lifespan, added durability)
- Rear swivel or rigid caster options

### PRODUCT SPECIFICATIONS:



### Load Capacity

1800 lbs  
816 kg

### Weight

85 lbs  
38.5 kg

